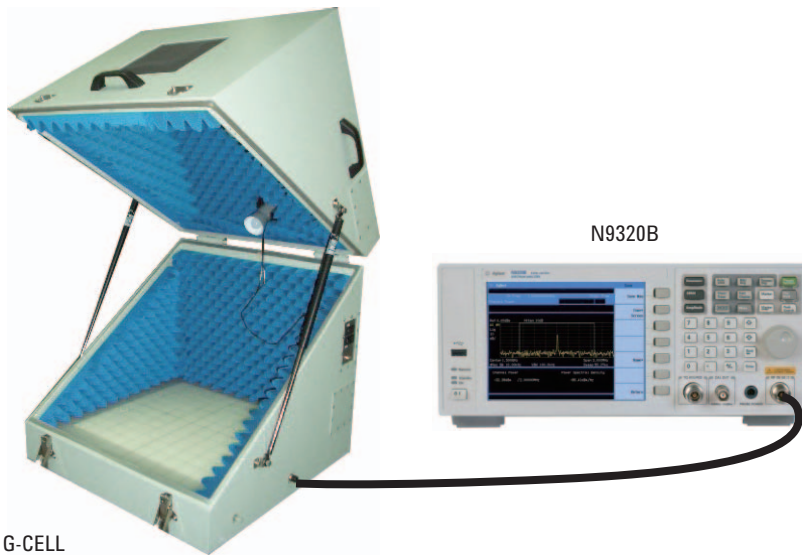


# EMI Pre-compliance Measurement Systems

## Agilent Technologies and TOYO Corporation



G-CELL

## TOYO EMI Pre-compliance Measurement Systems

With TOYO-made EMI Pre-compliance Measurement Systems, it is possible to easily measure radiated noise with the G-CELL or G-TEM cell instead of using an open area test site or in an anechoic chamber, which are mandatory for the EMI measurement in compliance with CISPR16.

This system can be used in a preliminary measurement before a compliance test and as a noise prevention tool. Using the EP5/ME software makes it possible to store and compare past data as well as to create a report.

### ■ Strengths of G-CELL

- Can measure a large EUT (maximum possible EUT size: 40x40x40cm) for its overall size.
- Has a large opening so that EUT can be placed easily.
- Can be installed at an office (external dimensions: 70x70x70cm)
- Can be used as a radiated immunity system (preliminary measurement)

### ■ Strengths of G-TEM

- Can support up to 18GHz.
- Comes in many sizes to support various EUT sizes.
- Can be used as a radiated immunity system (main test or preliminary measurement).

 **TOYO Corporation**

 **Agilent Technologies**

Global Solutions Partner

### Combination use with Agilent's spectrum analyzers

- Which model to use depends on the frequency required in a test.
- The QP measurement is possible by the EMI filter option.

### ■ System background

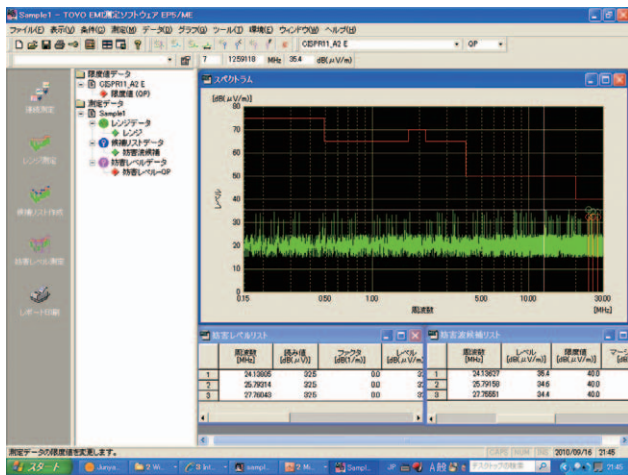
The EMI measurement is conducted in accordance with CISPR16, an international standard. This standard requires that the measurement be performed at an open area test site or in an anechoic chamber, both of which require a heavy investment. Also, even users having an anechoic chamber seem to find it difficult to use their chamber at their convenience because of its high frequency of use. This system can help such users to shorten the development schedule of a new product since it enables them to find a noise tendency and to take a preventative measure against it efficiently even before a main test.

### ■ Main users

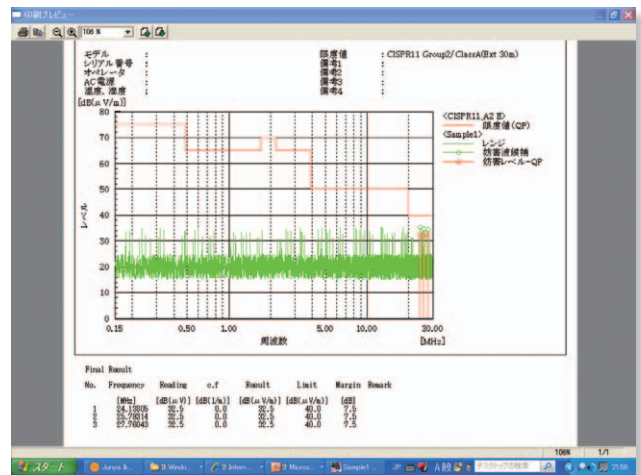
- Computer-related manufacturers
- Office equipment manufacturers
- Electric component manufacturers
- Other electric appliance manufacturers

 **Agilent Technologies**

# EMI Pre-compliance Measurement Systems



Screen example of EP5/ME-AJ Measurement Software



Output report example of EP5/ME-AJ

## Example of Agilent's components

Model	Product name
N9320B	Spectrum Analyzer 9k-3GHz
N9320B Opt. PA3	Pre-amplifier
N9320B Opt. EMF	EMI 6dB bandwidth
N9320B Opt. G01	GPIO interface

## Main components

Model	Product name
EP5/ME-AJ	Pre-compliance EMI Measurement Software
G-CELL	TEM-wave Large-bandwidth Transmission Line System
G-TEM	G-TEM Cell System
A set of RF cables	



Example of G-TEM application

**TOYO Corporation**  
**EMC & Microwave Systems**  
 TEL. 03-3245-1244  
 FAX. 03-3246-0645  
 e-mail: microwave@toyo.co.jp  
 www.toyo.co.jp/microwave/

**Agilent Technologies Japan, Ltd.**  
 Headquarters  
 9-1 Takakura-cho, Hachioji-shi, Tokyo 192-8510

**Customer Contact Center**  
 TEL ■■ 0120-421-345(042-656-7832)  
 FAX ■■ 0120-421-678(042-656-7840)  
 Email contact\_japan@agilent.com  
 www.agilent.co.jp

Product specifications and descriptions in this document subject to change without notice.

©Agilent Technologies, Inc. 2011

Published in Japan, May 20, 2011  
 5990-7345EN  
 0000-08MS